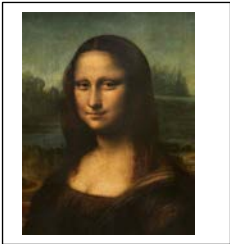




# Citing visual sources in MLA Format 8<sup>th</sup> ed.

Remember that MLA 8<sup>th</sup> edition is about CONTAINERS; include details about where your resource was found. If you find a source on Pinterest, Facebook, etc, search online to find the original site where the image

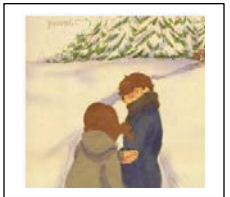


## Online image of a physical object

Lastname, Firstname. *Full Title of Art Work*. Date created, current location of item, city. *Name of container website*, URL.

*Example, online image of a painting:*

Da Vinci, Leonardo. *Portrait of Lisa Gherardini, Wife of Francesco del Giocondo, Known as the Mona Lisa*. 1503-1506, The Louvre, Paris. *Musee du Louvre*. [www.louvre.fr/en/oeuvre-notices/mona-lisa-portrait-lisa-gherardini-wife-francesco-del-giocondo](http://www.louvre.fr/en/oeuvre-notices/mona-lisa-portrait-lisa-gherardini-wife-francesco-del-giocondo)

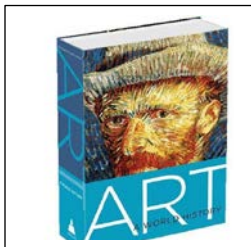


## Image: digital-only picture

Lastname, Firstname. *Full Title of Art Work*. Date created, *Name of website*, URL.

*Example:*

Puuung. *Snow Path*. 2 Dec. 2016, *Grafolio*. [www.grafolio.com/works/243875&from=cr\\_fd&folderNo=351](http://www.grafolio.com/works/243875&from=cr_fd&folderNo=351)



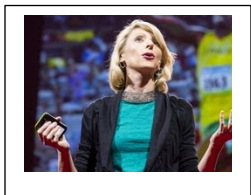
## Image from a book

Artist Lastname, Firstname. *Full Title of Art Work*. Date created, current location, city. *Book title*, by Firstname Lastname, Publisher, year, p.page number.

*Example\**

Da Vinci, Leonardo. *Mona Lisa*. 1503-1506. Musee du Louvre, Paris. *Art: A World History*, by Elke Linda Buchholz et al. Abrams, 2007, pp. 148-149.

*\*Notes: In this book, painting is listed only as "Mona Lisa," so that is used as title. Also 3+ authors for the book, so first author is listed and et al for the rest.*



## YouTube video

Lastname, Firstname or Username. "Title of Video." *Name of website*, uploaded by username, date posted, URL.

*Example:*

Cuddy, Amy. "Your body language may shape who you are." *YouTube*, uploaded by TED, 1 Oct. 2012, [www.youtube.com/watch?v=Ks-Mh1QhMc](http://www.youtube.com/watch?v=Ks-Mh1QhMc).

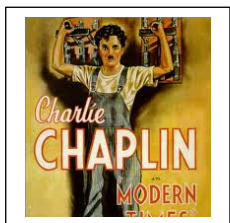


## Streaming video: Netflix, Hulu, etc

*Movie title*. Directed by [firstname lastname], performance by [firstname lastname], Distributor, release date. *Streaming service*, URL.

*Example:*

*In Defense of Food*. Directed by Michael Schwarz, hosted by Michael Pollan, PBS, 2015. *Netflix*, [www.netflix.com/title/80097071](http://www.netflix.com/title/80097071)



## DVD

*Movie title*. Directed by [firstname lastname], performance by [firstname lastname], Distributor, release date.

*Example, general movie:*

*Modern Times*. Directed by Charlie Chaplin, performance by Charlie Chaplin, Warner Home Video, 2003.

*Example (emphasize an actor, director, etc, by listing them in the author section):*  
Chaplin, Charlie, performer. *Modern Times*. Warner Home Video, 2003.

## Works Cited entry or source note?

If you are *showing* an image within the text of your paper, include a source note. A Works Cited entry is not needed. If you only *refer to* information from the table/image but don't show the image itself, use in-text and Works Cited entries as usual.

Source notes are similar to, but not the same as, Works Cited entries. There is no hanging indent for source notes. List the author name as Firstname Lastname. Replace the periods separating sections with commas. If there are already commas in the titles, you may use semicolons to make separations clearer. (See the fig. 1 note for an example.)

Questions? Check with your professor or a writing center tutor for assistance.

### Tables (lines of data, numbers)

Format your in-text citation this way: (see table 8). When placing in paper, add the table reference (the label) above the data shown. The table is added below the caption, and left-aligned with the standard 1" MLA margins (so table is flush/ in-line with text of paper.) Example:

Table 1

Assets required to fund an annual annuity of \$1 payable at 65, at alternative interest rates

Interest rate	Annuity cost
4.0%	\$12.58
4.5	12.05
5.0	11.55
5.5	11.09
6.0	10.67
6.5	10.27
7.0	9.89
7.5	9.54
8.0	9.21
8.5	8.90

Source: Sylvester J. Schieber, *The Predictable Surprise: The Unraveling of the US Retirement System*, Oxford, 2012, p. 183, EBSCOhost, [search.ebscohost.com/login.aspx?direct=true&db=nlebk&AN=422146&site=ehost-live](http://search.ebscohost.com/login.aspx?direct=true&db=nlebk&AN=422146&site=ehost-live)

Please see MLA8 handout for how to format different sources, but for this example (from an ebook in a database):

Source: Firstname Lastname, *Title of Book*, publisher, year, p. page number, database used, URL.

### Figures (any image that is not a table – maps, charts, videos, etc)

Format your in-text citation this way: (see fig. 4). When placing in paper, put all figure information, including a brief caption, below the image. The image can be placed as desired (left-aligned, centered, etc) but standard MLA 1" margins should be maintained. Example:

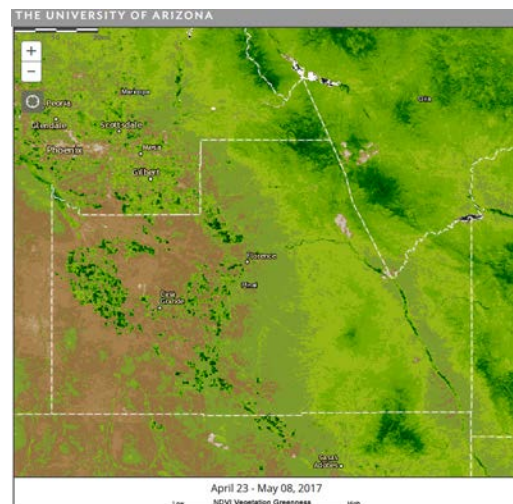


Fig. 1. Pinal County vegetation in early May 2017. CLIMAS, University of Arizona; "NDVI Vegetation Greenness April 23-May 08, 2017"; *DroughtView*; 30 May 2017; [droughtview.arizona.edu](http://droughtview.arizona.edu).

Please see MLA8 handout for how to format different sources, but for this example (map from a website):

Fig. x. Caption. Firstname Lastname or corporate (organization) author, "Name of Web Page," *Name of Site*, publication date, URL.

For more information on citations, check the OWL at Purdue University:  
<https://owl.english.purdue.edu/owl/resource/747/14/>