

Fall Semester 2017

Table of Contents

	Page
» Fall Student District Demographics	3
» Fall FTSE & Headcount by Campus	4
» Fall FTSE & Headcount by Physical Location	5
» Fall FTSE & Headcount by Division	6
» Fall FTSE & Headcount by Instructional Method	7
» Fall FTSE & Headcount by Subject Code	8
» Fall Average Class Size By Campus	9
» Fall Average Class Size By Division	10
» Fall Average Class Size By Instructional Method	11
» Fall Cancelled Class Summary by Campus	12
» Fall Cancelled Class Summary by Division	13
» Fall Cancelled Class Summary by Instructional Method	14
» Fall Average Age	15
» Fall Credit Hour Analysis	16
» Fall Course Size Range Summary	17
» Top 25 FTSE Generating Courses	18
» New/Continuing/Returning Students	19

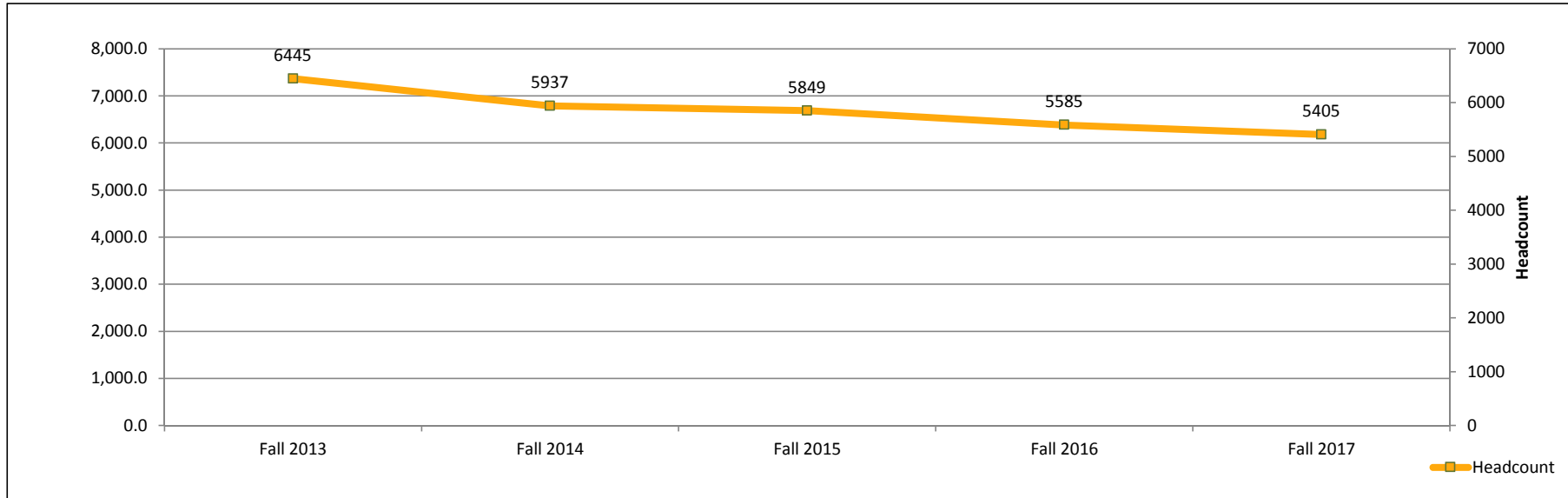
**Central Arizona College
Factbook
Fall Semester Student District Demographics**

	<u>Fall 2013</u>	<u>Fall 2014</u>	<u>Fall 2015</u>	<u>Fall 2016</u>	<u>Fall 2017</u>	<u>% Change Fall 2016 - 2017</u>
Semester District FTSE	3642.1	3400.7	3369.3	3213.3	3121.9	-2.8%
Unduplicated Headcount	6445	5937	5849	5585	5405	-3.2%
Total Credit Hours	54631.0	51010.8	50540.0	48199.0	46828.5	-2.8%
Average Credit Hours Per Student	8.48	8.60	8.60	8.60	8.70	1.2%
Full-Time	2129	1925	1897	1836	1813	-1.3%
Part-Time	4316	4012	3952	3749	3592	-4.2%
Degree/Certificate Seeking	5462	5273	5140	4869	4836	-0.7%
Non-Degree/Certificate Seeking	983	658	709	716	569	-20.5%
Gender						
Female	63.0%	62.8%	61.9%	61.7%	62.0%	0.5%
Male	36.8%	36.7%	37.3%	37.4%	37.0%	-1.1%
Not Recorded	0.2%	0.5%	0.8%	0.9%	1.0%	11.1%
Ethnicity						
Asian	1.7%	2.0%	2.2%	2.2%	2.1%	-4.5%
Black	7.1%	6.9%	6.7%	7.0%	6.8%	-2.9%
Hawaiian-Pacific Island	0.5%	0.6%	0.4%	0.5%	0.4%	-20.0%
Hispanic	28.3%	27.9%	29.1%	30.9%	32.6%	5.5%
Native American	4.6%	4.6%	4.7%	5.2%	5.0%	-3.8%
Not Identified	7.2%	7.8%	8.4%	8.8%	8.7%	-1.1%
Other	3.9%	4.0%	4.4%	4.2%	4.7%	11.9%
White	46.6%	46.3%	44.0%	41.3%	39.6%	-4.1%
AGE						
Under 18	7.1%	6.8%	7.9%	8.8%	8.9%	1.1%
18-19	26.7%	28.3%	28.8%	29.4%	29.4%	0.0%
20-21	12.0%	13.1%	15.2%	15.5%	16.0%	3.2%
22-24	9.1%	8.7%	8.8%	10.0%	10.4%	4.0%
25-29	10.9%	11.3%	10.4%	9.0%	10.1%	12.2%
30-34	9.8%	9.2%	8.5%	7.6%	7.4%	-2.6%
35-39	7.5%	7.2%	6.3%	6.3%	5.5%	-12.7%
40-49	9.8%	9.0%	8.3%	7.9%	7.8%	-1.3%
50-64	5.9%	5.4%	4.7%	4.7%	3.8%	-19.1%
65 & Up	1.3%	0.9%	1.0%	0.8%	0.7%	-12.5%
No Response	0.0%	0.0%	0.0%	0.0%	0.0%	0.0%
Average Age	27	27	26	27	25	-7.4%
Residency Status						
Foreign	0.3%	0.4%	0.4%	0.4%	0.4%	0.0%
Out of State	4.3%	4.6%	4.6%	3.1%	3.1%	0.0%
Out of County	16.7%	15.1%	15.5%	14.6%	14.8%	1.4%
Pinal County	78.5%	79.8%	79.4%	78.2%	81.3%	4.0%
Unknown	0.2%	0.1%	0.1%	3.5%	0.4%	-88.6%

Source: CASA Semester Demographic Report 10/12/2017

Note: Total includes non state funded students

Fall Semester FTSE & Headcount by Campus											
FTSE	Fall 2013	Fall 2014	Fall 2015	Fall 2016	Fall 2017	Headcount	Fall 2013	Fall 2014	Fall 2015	Fall 2016	Fall 2017
Aravaipa Campus	67.1	69.9	60.5	63.9	73.6	Aravaipa	184	158	154	172	179
Casa Grande Center	36.6	20.3	15.6	14.9	11.6	Casa Grande Center	183	97	73	78	58
Central Corporate Center	88.1	91.8	58.6	54.5	9.7	Central Corporate Center	311	337	214	208	34
Coolidge	0.0	0.0	0.0	0.0	0.0	Coolidge	0	0	0	0	0
Florence Center	5.3	0.7	2.9	0.4	0.4	Florence Center	25	3	12	2	2
Maricopa Campus	217.1	239.5	257.9	263.8	270.3	Maricopa Campus	503	548	589	623	600
Saddlebrooke Center	3.8	0.0	0.0	0.0	0.0	Saddlebrooke Center	36	0	0	0	0
San Tan Campus	186.1	278.9	321.0	333.7	328.6	San Tan Campus	475	643	739	730	725
Signal Peak Campus	1,536.5	1,339.1	1,392.2	1,247.6	1,241.6	Signal Peak	2,822	2,485	2,508	2,270	2,258
Superstition Mountain Campus	494.1	438.7	360.5	312.9	274.1	Superstition Mountain Campus	1,051	896	744	670	567
Virtual	1,007.5	893.4	868.3	899.9	894.5	Virtual	2,733	2,452	2,434	2,480	2,425
Total FTSE	3,642.1	3,400.7	3,369.3	3,213.3	3,121.9	Total Unduplicated Headcount	6445	5937	5849	5585	5405



Note: Unduplicated Headcount for the District will not equal the sum of the individual Campuses
 Note: Total includes non state funded students
 Source: CASA Semester FTSE & Headcount by Campus Report 10/12/2017

Central Arizona College Factbook FTSE & Headcount by Location								
Location	FTSE				Headcount			
	Fall 2014	Fall 2015	Fall 2016	Fall 2017	Fall 2014	Fall 2015	Fall 2016	Fall 2017
Aravaipa Campus	69.9	59.8	63.9	73.6	158	152	172	179
Casa Grande Center	20.3	15.6	14.9	11.6	97	73	78	58
Central Corporate Center	91.8	58.6	54.5	9.7	337	214	208	34
Dave White Park	0.7	0.9	0.7	0.0	11	13	10	0
Florence Center	0.7	2.9	0.4	0.4	3	12	2	2
Maricopa Campus	239.5	256.3	262.4	270.3	548	587	617	600
Online	923.7	935.6	926.4	915.7	2,539	2,642	2,551	2,496
San Tan Campus	278.9	316.1	333.7	328.6	643	721	730	725
Signal Peak Campus	1,336.4	1,364.7	1,247.2	1,240.3	2,467	2,433	2,263	2,259
Superstition Mountain Campus	436.9	359.0	308.9	271.7	889	742	662	561
District FTSE Total:	3,400.7	3,369.3	3,213.3	3,121.9	5,937	5,849	5,585	5,405

Note: Total includes non state funded students

Note: Unduplicated Headcount for the District will not equal the sum of the individual

Source: CASA Semester FTSE and Enrollment by Location Report 10/12/2017

Central Arizona College Factbook Fall District FTSE & Headcount by Division						
FTSE - Division	Fall 2013	Fall 2014	Fall 2015	Fall 2016	Fall 2017	% Change Fall 2016- 2017
Business	369.5	383.5	374.2	328.7	333.0	1.3%
Communications	673.5	632.5	593.5	576.3	597.9	3.8%
Creative Arts	276.2	247.5	231.8	214.9	207.2	-3.6%
Education	97.9	79.2	87.1	102.9	92.9	-9.7%
Health Careers	266.0	221.4	264.3	170.1	141.7	-16.7%
Honors	12.0	7.9	10.4	9.7	3.5	-63.7%
Math	503.0	463.5	498.3	523.7	526.0	0.4%
Nursing	63.8	66.5	69.9	67.3	68.5	1.8%
Nutrition	128.3	121.9	95.9	65.9	65.9	0.0%
Public Safety	110.7	79.5	104.6	77.3	63.0	-18.5%
Science	398.5	380.8	394.8	388.9	394.9	1.5%
Social/Behavioral Sciences	405.1	425.3	337.8	348.1	313.0	-10.1%
Sports and Fitness	112.1	99.9	99.9	117.1	78.2	-33.2%
Technology	141.2	141.1	157.8	181.5	203.4	12.0%
Workforce/Community Education	84.2	50.3	49.0	40.7	32.8	-19.5%
District Total:	3,642.1	3,400.7	3,369.3	3,213.3	3,121.9	-2.8%
Unduplicated Headcount - Division	Fall 2013	Fall 2014	Fall 2015	Fall 2016		% Change Fall 2016- 2017
Business	1,319	1,333	1,253	1,125	1,118	-0.6%
Communications	2,585	2,457	2,348	2,289	2,328	1.7%
Creative Arts	1,165	1,081	993	936	923	-1.4%
Education	393	331	315	366	338	-7.7%
Health Careers	598	519	624	476	355	-25.4%
Honors	63	45	56	51	21	-58.8%
Math	2,161	1,963	2,120	2,190	2,174	-0.7%
Nursing	108	107	113	110	111	0.9%
Nutrition	479	442	361	247	258	4.5%
Public Safety	262	235	254	130	98	-24.6%
Science	1,367	1,301	1,345	1,341	1,371	2.2%
Social/Behavioral Sciences	1,803	1,795	1,517	1,623	1,268	-21.9%
Sports and Fitness	883	793	690	769	479	-37.7%
Technology	405	389	447	423	491	16.1%
Workforce/Community Education	438	238	231	207	164	-20.8%
Unduplicated Total:	6,445	5,937	5,849	5,585	5,405	-3.2%

Note: Unduplicated Headcount for the District will not equal the sum of the individual Divisions

Note: Total includes non state funded students

Source: CASA Semester FTSE and Enrollment by Division Report 10/12/2017

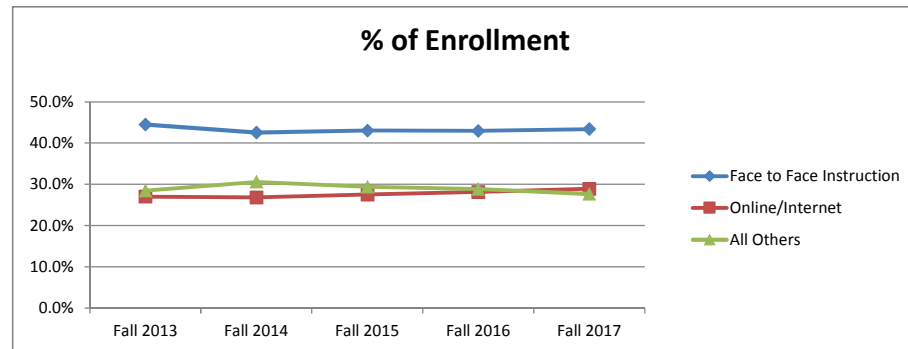
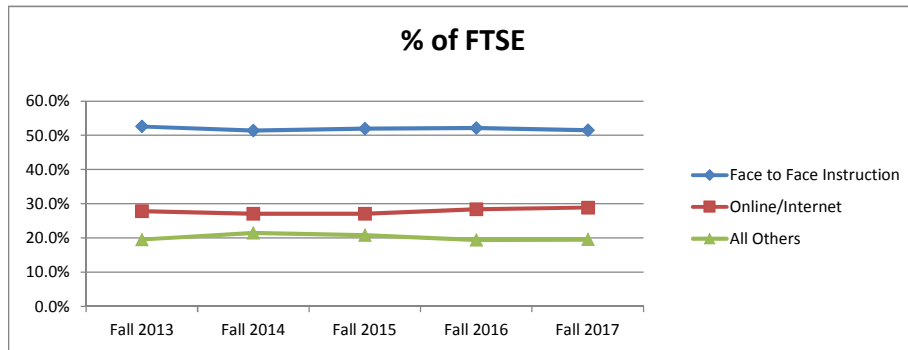
**Central Arizona College
Factbook
Fall FTSE & Headcount by Instructional Method**

FTSE -Instructional Method	Fall 2013	Fall 2014	Fall 2015	Fall 2016	Fall 2017	% Change Fall 2016 - 2017
Face to Face Instruction	1,916.3	1,748.5	1,753.2	1,676.3	1,607.5	-4.1%
Hybrid-F2F/Online	462.6	457.1	404.7	343.9	319.9	-7.0%
Hybrid-F2F/iTV	1.4	0.0	2.3	0.0	0.0	
Hybrid-Online/iTV	140.6	221.3	211.5	186.3	218.1	17.0%
Independent Directed Study	2.3	3.3	2.9	10.1	5.1	-49.4%
Interactive Television	85.6	23.8	57.0	61.5	53.2	-13.5%
Internship	6.1	7.3	9.8	8.4	4.8	-42.9%
Mixed Face to Face	0.0	0.0	1.3	0.0	0.0	
Online/Distance	1,013.5	921.9	914.1	912.2	902.3	-1.1%
Online Synch	0.0	4.8	1.6	12.3	9.5	-22.7%
Practicum	13.7	12.8	10.9	2.3	1.5	-35.2%
FTSE Total	3,642.1	3,400.7	3,369.3	3,213.3	3,121.1	-2.9%

Headcount - Instructional Method	Fall 2013	Fall 2014	Fall 2015	Fall 2016	Fall 2017	% Change Fall 2015- 2016
Face to Face Instruction	4,535	4,025	4,015	3,856	3,707	-3.9%
Hybrid-F2F/Online	1,851	1,776	1,545	1,435	1,201	-16.3%
Hybrid-F2F/iTV	7	0	17	0	0	
Hybrid-Online/iTV	581	861	781	718	817	13.8%
Independent Directed Study	8	13	14	41	22	-46.3%
Interactive Television	363	117	266	295	257	-12.9%
Internship	26	32	33	37	22	-40.5%
Mixed Face to Face	0	0	20	0	0	
Online/Distance	2,753	2,537	2,567	2,527	2,472	-2.2%
Online Synch	0	18	8	45	33	-26.7%
Practicum	66	75	56	17	11	-35.3%
Headcount Total	6,445	5,937	5,849	5,585	5,405	-3.2%

% of FTSE	Fall 2013	Fall 2014	Fall 2015	Fall 2016	Fall 2017
Face to Face Instruction	52.6%	51.4%	52.0%	52.2%	51.5%
Online/Internet	27.8%	27.1%	27.1%	28.4%	28.9%
All Others	19.6%	21.5%	20.8%	19.4%	19.6%

% of Enrollment	Fall 2013	Fall 2014	Fall 2015	Fall 2016	Fall 2017
Face to Face Instruction	44.5%	42.6%	43.1%	43.0%	43.4%
Online/Internet	27.0%	26.8%	27.5%	28.2%	28.9%
All Others	28.5%	30.6%	29.4%	28.8%	27.7%

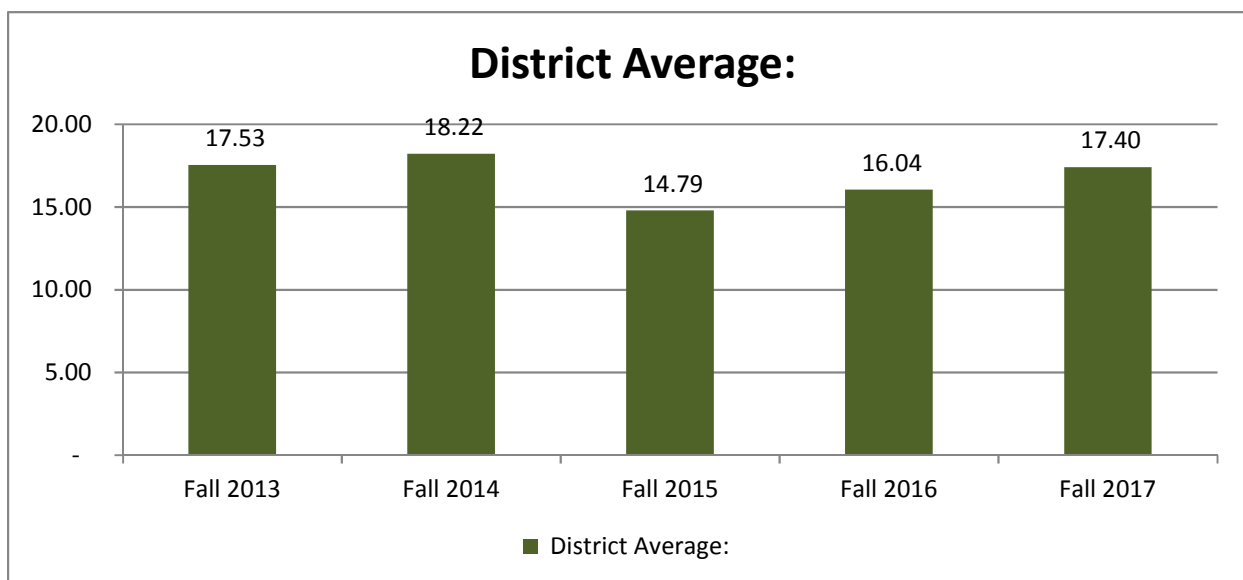


Note: Unduplicated Headcount for the District will not equal the sum of the individual Divisions
 Note: Total includes non state funded students
 Source: CASA Fall FTSE and Enrollment by Instructional Method 10/12/2017

Central Arizona College
Factbook
Fall District FTSE & Headcount by Division & Subject Code

	FTSE						Headcount				
	SUBJ CODE	Fall 2013	Fall 2014	Fall 2015	Fall 2016	Fall 2017	Fall 2013	Fall 2014	Fall 2015	Fall 2016	Fall 2017
Business	ACC	48.2	39.4	44.2	45.6	48.6	221	178	205	211	225
	BUS	111.2	115.4	105.4	87.8	88.6	463	490	446	373	380
	CBA	9.7	9.4	3.6	6.3	6.0	83	41	18	46	29
	CIS	143.4	147.8	145.4	123.4	126.5	672	648	634	531	549
	CUL	13.1	14.1	20.8	18.4	20.7	89	83	90	83	84
	ECN	39.6	41.2	37.2	37.2	32.4	195	202	177	181	159
	HRM	11.2	9.4	11.6	5.2	10.2	42	39	47	23	39
	REA	5.2	6.8	6.0	4.9	0.0	13	17	15	0	0
	SBO	1.0	0.0	0.0	0.0	0.0	5	0	0	0	0
Business Total		369.5	383.5	374.2	328.7	333.0	1319	1333	1253	1125	1,118
Communications	CHI	2.9	0.0	1.4	0.0	0.0	11	0	3	0	0
	COM	131.6	117.0	108.2	107.2	97.4	645	582	533	527	469
	ENG	258.8	343.8	334.2	330.4	343.0	1792	1664	1620	1590	1,601
	FRE	5.1	5.6	5.9	2.7	0.0	19	21	22	10	0
	HIN	0.2	0.0	0.0	0.0	0.0	1	0	0	0	0
	HMC	8.8	6.8	10.2	8.2	14.6	43	34	51	41	71
	LIT	21.6	27.4	26.2	22.0	30.8	108	135	128	110	152
	RDG	92.5	80.7	68.1	72.9	74.4	415	367	314	334	372
	SLG	13.1	8.5	9.6	9.3	11.2	49	32	36	35	42
	SPA	38.9	42.6	29.8	23.6	26.5	143	166	113	89	100
Communications Total		673.5	632.5	593.5	576.3	597.3	2585	2457	2348	2289	2,328
Creative Arts	ART	118.4	112.6	89.6	80.2	85.6	548	523	414	369	403
	DAN	1.4	0.0	1.3	0.0	0.0	21	0	15	0	0
	EIT	32.0	32.4	37.8	25.5	21.4	110	109	136	104	82
	MHL	72.2	66.6	66.4	75.8	75.0	357	332	330	378	370
	MSC	26.6	18.6	15.6	17.6	15.2	121	78	62	68	63
	MTC	2.8	0.0	0.9	0.0	0.2	12	0	4	0	1
	MUP	0.0	0.3	0.0	0.0	0.5	0	4	0	0	8
	THE	22.8	17.0	20.2	15.8	9.2	112	85	101	75	44
Creative Arts Total		276.2	247.5	231.8	214.9	207.2	1165	1081	993	936	923
Education	ECE	64.7	54.2	56.5	75.7	65.5	279	231	203	256	240
	EDU	33.2	25.0	30.6	27.2	27.4	136	110	125	122	112
Education Total		97.9	79.2	87.1	102.9	92.9	393	331	315	366	338
Health Careers	CNA	0.0	13.2	24.5	17.1	12.8	0	33	46	32	24
	CPH	0.0	0.0	0.0	2.8	5.6	0	0	0	7	14
	DMS	4.8	0.0	0.0	0.0	0.0	6	0	0	0	0
	HCC	119.4	97.2	114.3	38.1	33.9	343	282	300	173	137
	HIM	38.9	31.3	30.5	24.5	21.7	119	98	94	74	62
	HPM	77.9	53.1	70.4	46.7	27.1	215	164	241	208	109
	LMT	0.0	0.0	0.0	10.5	9.6	0	0	0	15	18
	PHT	0.0	0.0	0.0	3.7	4.7	0	0	0	11	10
	RAD	25.0	26.6	24.6	26.7	26.2	36	38	36	38	38
Health Careers Total		266.0	221.4	264.3	170.1	141.7	598	519	624	476	355
Honors	HNR	12.0	7.9	10.4	9.7	3.5	63	45	56	51	21
Math	MAT	503.0	463.5	498.3	523.7	526.0	2161	1963	2120	2190	2,174
Nursing	NUR	63.8	66.5	69.9	67.3	68.5	108	107	113	110	111
Nutrition	NTR	115.2	121.9	95.9	65.9	65.9	421	442	361	247	258
Public Safety	EMS	67.8	63.5	57.3	42.8	38.7	207	208	184	87	56
	FSC	42.9	16.0	47.3	34.5	24.3	85	43	103	71	53
Public Safety Total		110.7	79.5	104.6	77.3	63.0	262	235	254	130	98
Science	AST	4.0	5.9	6.1	4.0	2.7	15	22	23	15	10
	BIO	295.9	265.5	273.5	282.1	297.1	1085	975	993	1019	1,085
	CHM	62.4	62.0	61.8	56.8	56.0	230	235	232	206	203
	ENV	18.1	19.5	21.6	21.3	20.0	67	73	81	80	75
	GLG	10.9	19.7	17.3	12.8	7.7	41	74	64	48	29
	PHY	7.2	8.3	13.6	11.5	10.9	27	31	51	43	41
	SCI	0.0	0.0	0.8	0.4	0.5	0	0	10	6	7
Science Total		398.5	380.8	394.8	388.9	394.9	1367	1301	1345	1341	1,371
Social/Behavioral Sciences	AJS	45.2	45.8	42.2	36.8	43.6	177	176	161	152	165

Central Arizona College Factbook Fall Semester Average Class Size by Campus						
Average Course Size - Campus	Fall 2013	Fall 2014	Fall 2015	Fall 2016	Fall 2017	% Change Fall 2016-2017
Aravaipa Campus	9.69	11.33	7.16	10.42	12.17	-14.4%
Casa Grande Center	16.64	12.13	14.60	11.14	14.50	-23.2%
Central Corporate Center	14.92	12.93	8.63	11.88	11.33	4.9%
Florence Center	10.00	-	2.50	-	32.00	
Maricopa Campus	17.16	17.00	12.18	16.09	16.97	-5.2%
Saddlebrokke	9.50	-	-	-	-	
San Tan Campus	16.42	18.53	14.59	16.75	16.73	0.1%
Signal Peak Campus	17.13	18.09	15.10	15.53	17.44	-11.0%
Superstition Mountain Campus	14.97	15.48	10.70	13.25	13.91	-4.7%
Virtual	21.87	22.11	20.72	19.36	19.93	-2.9%
District Average:	17.53	18.22	14.79	16.04	17.40	-7.8%
District Average less ASP:	17.53	18.22	14.79	16.04	17.40	-7.8%



Note: Total includes non state funded students

Source: CASA Semester Class Size By Campus Report 10/12/2017

*Average Course Size can not be averaged down a Term Code column to equal the District Average at the bottom because each subgrouping has a different unknown number of students causing each subgrouping's average to be weighted differently.

*Each iTV course is only counted once no matter how many locations it broadcasts to. Also, each overlay course is only counted once no matter how many courses an instructor is teaching simultaneously.

*Independent Study Instructional Method courses are not counted

Central Arizona College
Factbook
Fall Cancelled Class Report
(Includes only classes where enrollment will be reported on day 45)
Fall 2017

Division	# Cancelled Classes	Classes Enrollment > 0	Total Classes	% Cancelled	% >Zero Enrollment	Max Enrollment >0 Classes	Total Enrollment	% of max enrollment	Average Class Size
Business	70	94	164	43%	57%	2,992	1,680	56%	17.9
Communications	68	179	247	28%	72%	3,747	2,943	79%	16.4
Creative Arts	26	70	96	27%	73%	1,311	1,040	79%	14.9
Education	19	26	45	42%	58%	876	472	54%	18.2
Health Careers	34	47	81	42%	58%	1,116	765	69%	16.6
Honors	9	10	19	47%	53%	94	27	29%	2.7
Math	37	103	140	26%	74%	2,979	2,180	73%	21.2
Nursing	0	6	6	0%	100%	180	162	90%	27.0
Nutrition	5	20	25	20%	80%	555	320	58%	16.6
Public Safety	29	15	44	66%	34%	375	162	43%	10.8
Science	14	83	97	14%	86%	1,961	1,486	76%	17.9
Social and Behavioral Science	10	73	83	12%	88%	2,016	1,551	77%	21.3
Sports & Fitness	7	32	39	18%	82%	996	618	62%	19.9
Technology	55	62	117	47%	53%	1,145	861	75%	13.9
Workforce/Community Education	11	12	23	48%	52%	281	164	58%	13.7
Grand Total	394	832	1,226	32%	68%	20,624	14,431	70%	17.4

Source: Semester Cancelled Class by Division Report 10/12/2017

* Each iTV course is only counted once no matter how many locations it broadcasts to. Also, each overlay course is only counted once no matter how many courses an instructor is teaching simultaneously.

*Independent Study Instructional Method courses are not counted.

*CRNs may not be summed down the Term Code column to equal the Grand Total as some courses may have multiple Credit Hour values and will create duplicates in the column.

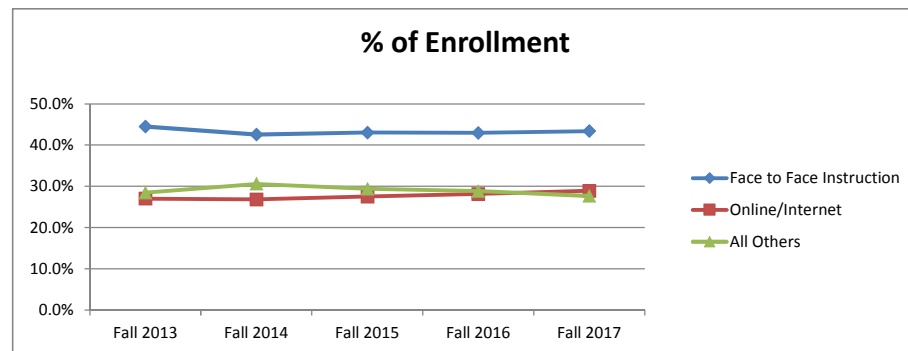
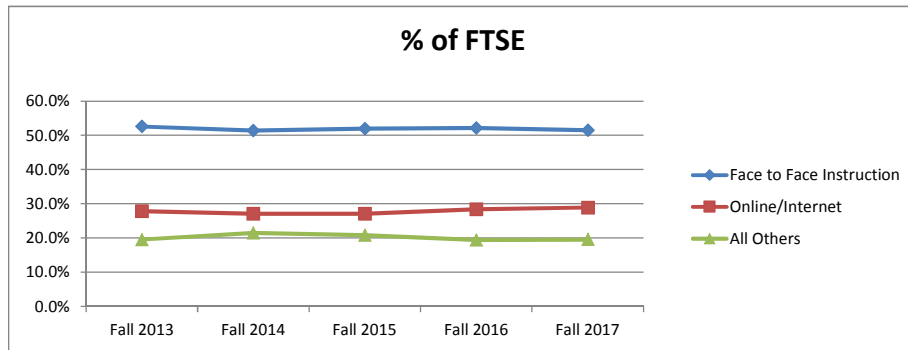
**Central Arizona College
Factbook
Fall FTSE & Headcount by Instructional Method**

FTSE -Instructional Method	Fall 2013	Fall 2014	Fall 2015	Fall 2016	Fall 2017	% Change Fall 2016 - 2017
Face to Face Instruction	1,916.3	1,748.5	1,753.2	1,676.3	1,607.5	-4.1%
Hybrid-F2F/Online	462.6	457.1	404.7	343.9	319.9	-7.0%
Hybrid-F2F/iTV	1.4	0.0	2.3	0.0	0.0	
Hybrid-Online/iTV	140.6	221.3	211.5	186.3	218.1	17.0%
Independent Directed Study	2.3	3.3	2.9	10.1	5.1	-49.4%
Interactive Television	85.6	23.8	57.0	61.5	53.2	-13.5%
Internship	6.1	7.3	9.8	8.4	4.8	-42.9%
Mixed Face to Face	0.0	0.0	1.3	0.0	0.0	
Online/Distance	1,013.5	921.9	914.1	912.2	902.3	-1.1%
Online Synch	0.0	4.8	1.6	12.3	9.5	-22.7%
Practicum	13.7	12.8	10.9	2.3	1.5	-35.2%
FTSE Total	3,642.1	3,400.7	3,369.3	3,213.3	3,121.1	-2.9%

Headcount - Instructional Method	Fall 2013	Fall 2014	Fall 2015	Fall 2016	Fall 2017	% Change Fall 2015- 2016
Face to Face Instruction	4,535	4,025	4,015	3,856	3,707	-3.9%
Hybrid-F2F/Online	1,851	1,776	1,545	1,435	1,201	-16.3%
Hybrid-F2F/iTV	7	0	17	0	0	
Hybrid-Online/iTV	581	861	781	718	817	13.8%
Independent Directed Study	8	13	14	41	22	-46.3%
Interactive Television	363	117	266	295	257	-12.9%
Internship	26	32	33	37	22	-40.5%
Mixed Face to Face	0	0	20	0	0	
Online/Distance	2,753	2,537	2,567	2,527	2,472	-2.2%
Online Synch	0	18	8	45	33	-26.7%
Practicum	66	75	56	17	11	-35.3%
Headcount Total	6,445	5,937	5,849	5,585	5,405	-3.2%

% of FTSE	Fall 2013	Fall 2014	Fall 2015	Fall 2016	Fall 2017
Face to Face Instruction	52.6%	51.4%	52.0%	52.2%	51.5%
Online/Internet	27.8%	27.1%	27.1%	28.4%	28.9%
All Others	19.6%	21.5%	20.8%	19.4%	19.6%

% of Enrollment	Fall 2013	Fall 2014	Fall 2015	Fall 2016	Fall 2017
Face to Face Instruction	44.5%	42.6%	43.1%	43.0%	43.4%
Online/Internet	27.0%	26.8%	27.5%	28.2%	28.9%
All Others	28.5%	30.6%	29.4%	28.8%	27.7%



Note: Unduplicated Headcount for the District will not equal the sum of the individual Divisions
 Note: Total includes non state funded students
 Source: CASA Fall FTSE and Enrollment by Instructional Method 10/12/2017

Central Arizona College
Factbook
Fall Cancelled Class Report
(Includes only classes where enrollment will be reported on day 45)
Fall 2017

Campus	# Cancelled Classes	Classes Enrollment > 0	Total Classes	Total Class >0 where Max Enroll set at 0	Total Class >0 and Max Enroll set at >0	% Cancelled	% >Zero Enrollment	Max Enrollment >0 Classes	Actual Enrollment	% of max enrollment	Average Class Size
Aravaipa Campus	23	29	52	0	29	44.0%	56.0%	616	353	57.0%	12.2
Casa Grande Center	3	4	7	0	3	43.0%	57.0%	73	58	79.0%	14.5
Central Corporate Center	19	3	22	0	3	86.0%	14.0%	54	34	63.0%	11.3
Florence Center	1	1	2	0	1	50.0%	50.0%	35	32	91.0%	32.0
Maricopa Campus	28	58	86	0	58	33.0%	67.0%	1,362	984	72.0%	17.0
San Tan Campus	16	74	90	0	74	18.0%	82.0%	1,731	1,238	72.0%	16.7
Signal Peak Campus	200	349	549	0	349	36.0%	64.0%	8,572	6,062	71.0%	17.4
Superstition Mountain Campus	42	95	137	0	95	31.0%	69.0%	2,080	1,313	63.0%	13.9
Virtual	62	219	281	0	219	22.0%	78.0%	6,101	4,357	71.0%	19.9
Grand Total	394	832	1,226	0	831	32.0%	68.0%	20,624	14,431	70.0%	17.4

Source: CASA Semester Cancelled Class by Campus Report 10/12/2017

* Each iTV course is only counted once no matter how many locations it broadcasts to. Also, each overlay course is only counted once no matter how many courses an instructor is teaching simultaneously.

*Independent Study Instructional Method courses are not counted.

*CRNs may not be summed down the Term Code column to equal the Grand Total as some courses may have multiple Credit Hour values and will create duplicates in the column.

Central Arizona College
Factbook
Fall Cancelled Class Report
(Includes only classes where enrollment will be reported on day 45)
Fall 2017

Division	# Cancelled Classes	Classes Enrollment > 0	Total Classes	% Cancelled	% >Zero Enrollment	Max Enrollment >0 Classes	Total Enrollment	% of max enrollment	Average Class Size
Business	70	94	164	43%	57%	2,992	1,680	56%	17.9
Communications	68	179	247	28%	72%	3,747	2,943	79%	16.4
Creative Arts	26	70	96	27%	73%	1,311	1,040	79%	14.9
Education	19	26	45	42%	58%	876	472	54%	18.2
Health Careers	34	47	81	42%	58%	1,116	765	69%	16.6
Honors	9	10	19	47%	53%	94	27	29%	2.7
Math	37	103	140	26%	74%	2,979	2,180	73%	21.2
Nursing	0	6	6	0%	100%	180	162	90%	27.0
Nutrition	5	20	25	20%	80%	555	320	58%	16.6
Public Safety	29	15	44	66%	34%	375	162	43%	10.8
Science	14	83	97	14%	86%	1,961	1,486	76%	17.9
Social and Behavioral Science	10	73	83	12%	88%	2,016	1,551	77%	21.3
Sports & Fitness	7	32	39	18%	82%	996	618	62%	19.9
Technology	55	62	117	47%	53%	1,145	861	75%	13.9
Workforce/Community Education	11	12	23	48%	52%	281	164	58%	13.7
Grand Total	394	832	1,226	32%	68%	20,624	14,431	70%	17.4

Source: Semester Cancelled Class by Division Report 10/12/2017

* Each iTV course is only counted once no matter how many locations it broadcasts to. Also, each overlay course is only counted once no matter how many courses an instructor is teaching simultaneously.

*Independent Study Instructional Method courses are not counted.

*CRNs may not be summed down the Term Code column to equal the Grand Total as some courses may have multiple Credit Hour values and will create duplicates in the column.

Central Arizona College
Factbook
Fall Cancelled Class Report
(Includes only classes where enrollment will be reported on day 45)

Fall 2017									
Instructional Method	# Cancelled Classes	Classes Enrollment > 0	Total Classes	% Cancelled	% >Zero Enrollment	Max Enrollment >0 Classes	Total Enrollment	% of max enrollment	Average Class Size
Face to Face Instruction	201	450	651	31%	69%	9,882	7,333	74%	16.3
Hybrid - F2F/Online	49	90	139	35%	65%	1,989	1,408	71%	15.6
Hybrid - Online/iTV	68	54	122	56%	44%	2,144	1,015	47%	18.8
Interactive Television (iTV)	11	13	24	46%	54%	393	266	68%	20.5
Internship	3	2	5	60%	40%	50	22	44%	11.0
Online/Distance	62	218	280	22%	78%	6,052	4,334	72%	19.9
Online Synch	1	2	3	33%	67%	60	33	55%	16.5
Practicum	0	3	3	0%	100%	54	20	37%	6.7
Grand Total	395	832	1,227	32%	68%	2,064	14,431	70%	17.3

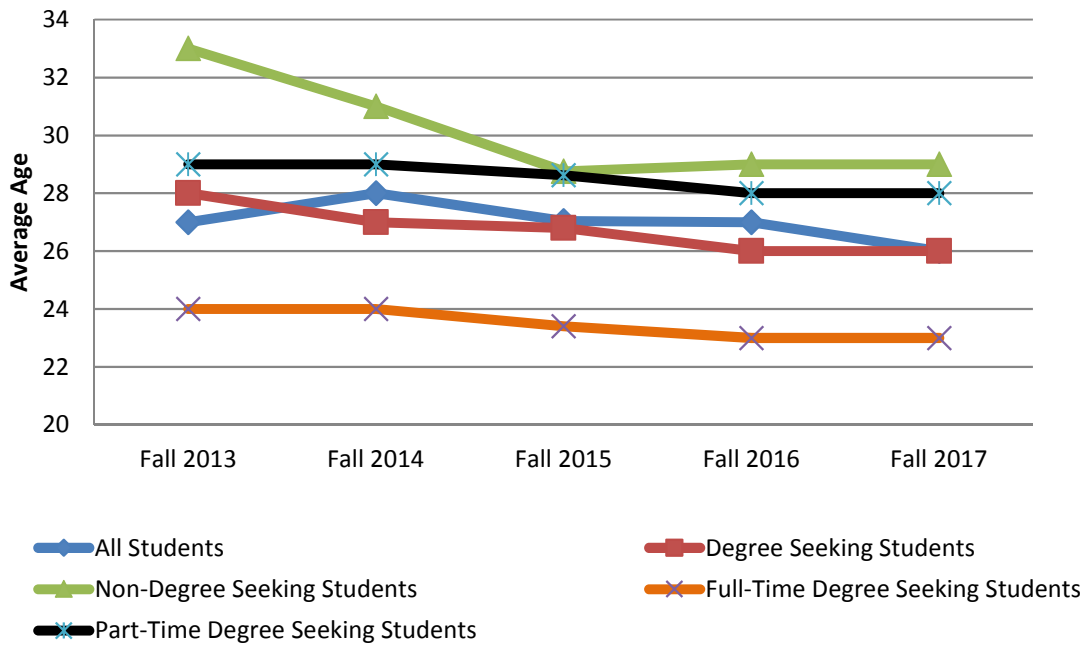
Source: CASA Semester Cancelled Class by Instructional Method Report 10/12/2017

* Each iTV course is only counted once no matter how many locations it broadcasts to. Also, each overlay course is only counted once no matter how many courses an instructor is teaching simultaneously.

*Independent Study Instructional Method courses are not counted.

*CRNs may not be summed down the Term Code column to equal the Grand Total as some courses may have multiple Credit Hour values and will create duplicates in the column.

**Central Arizona College
Factbook
Average Age of Students Fall by Semester**



	Fall 2013	Fall 2014	Fall 2015	Fall 2016	Fall 2017
All Students	27	28	27	27	26
Degree Seeking Students	28	27	27	26	26
Full-Time Degree Seeking Students	24	24	23	23	23
Part-Time Degree Seeking Students	29	29	29	28	28
Non-Degree Seeking Students	33	31	29	29	29

Source: Semester Average Age Report 10/25/2017

Central Arizona College Factbook Semester Credit Hour Analysis						
<u>Count of Classes by Credit Hour</u>	<u>Fall 2013</u>	<u>Fall 2014</u>	<u>Fall 2015</u>	<u>Fall 2016</u>	<u>Fall 2017</u>	<u>% Change Fall 2016-2017</u>
0.5	6	3	4	0	0	
1	101	70	72	78	32	-59.0%
1.25	0	0	1	0	0	
1.5	5	0	0	0	0	
2	51	39	55	41	31	-24.4%
3	670	594	750	632	567	-10.3%
3.25	0	11	12	0	0	
4	188	177	192	195	177	-9.2%
5	5	4	5	7	6	-14.3%
6	8	7	2	2	2	0.0%
8	10	5	9	8	11	37.5%
8.5	0	0	0	0	1	
9	0	6	5	6	4	-33.3%
11	0	0	2	1	1	0.0%
13	1	0	0	0	0	
17.5	1	1	1	0	0	
Total	1046	917	1110	970	832	-14.2%
<u>Enrollment by Credit Hour</u>	<u>Fall 2013</u>	<u>Fall 2014</u>	<u>Fall 2015</u>	<u>Fall 2016</u>	<u>Fall 2017</u>	<u>% Change Fall 2016-2017</u>
0.5	149	132	128	0	1	
1	1,757	1,288	1,070	1,174	414	-64.7%
1.25	0	0	10	0	0	
1.5	51	0	0	0	0	
2	766	696	866	600	530	-11.7%
3	11,948	11,002	10,696	10,203	9,888	-3.1%
3.25	0	163	170	0	0	
4	3,198	3,076	3,104	3,212	3,285	2.3%
5	58	65	63	90	68	-24.4%
6	68	65	31	22	24	9.1%
8	176	107	159	140	181	29.3%
8.5	0	0	0	0	14	
9	0	56	44	63	42	-33.3%
11	0	0	11	9	11	22.2%
13	13	0	0	0	0	
17.5	16	20	18	0	0	
Total	18200	16670	16370	15513	14458	-6.8%

(Includes only classes reported on day 45)

Enrollment Numbers are duplicate counts

CRN counts might not sum downwards if a CRN has two Credit hour listings.

*Each iTV course is only counted once no matter how many locations it broadcasts to. Also, each overlay course is only counted once no matter how many courses an instructor is teaching simultaneously.

*Independent Study Instructional Method courses are not counted

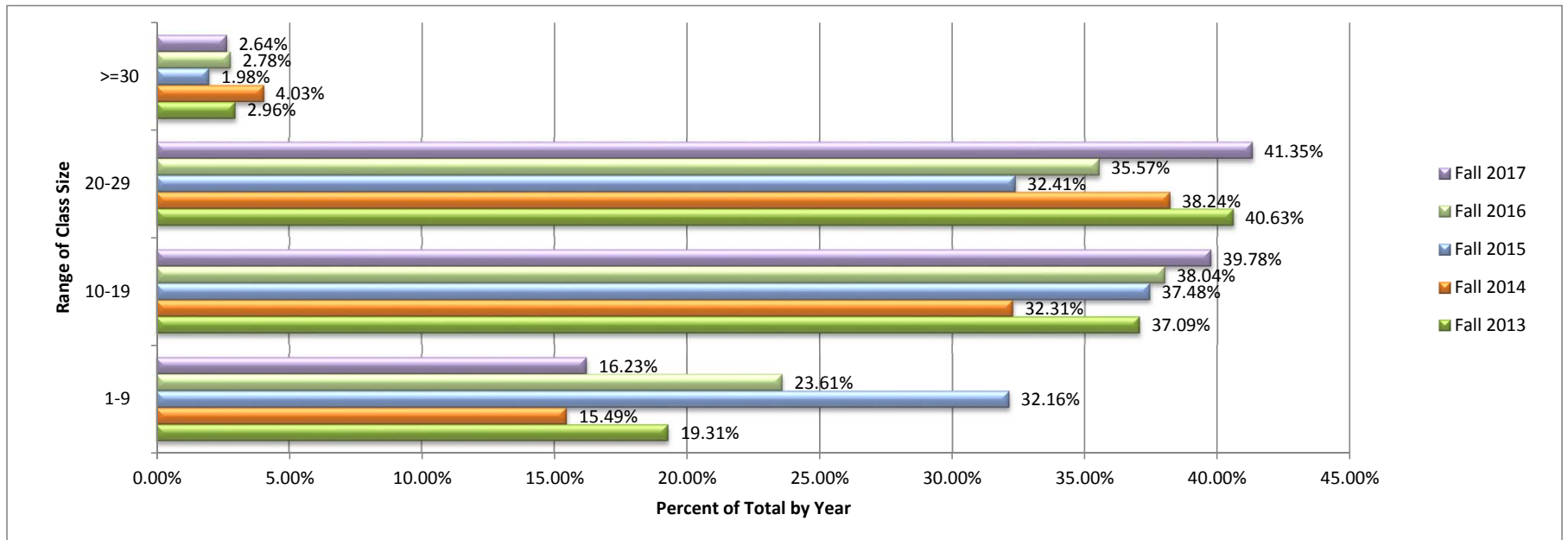
Source: CASA Semester Credit Hour Analysis Report 10/12/2017

Central Arizona College

Factbook

Semester Class Counts by Range of Class Size

Year	Fall 2013		Fall 2014		Fall 2015		Fall 2016		Fall 2017	
Count of Class by Range	#	%	#	%	#	%	#	%	#	%
1-9	202	19.31%	142	15.49%	357	32.16%	229	23.61%	135	16.23%
10-19	388	37.09%	338	32.31%	392	37.48%	369	38.04%	331	39.78%
20-29	425	40.63%	400	38.24%	339	32.41%	345	35.57%	344	41.35%
30-39	23	2.20%	26	2.49%	14	1.34%	22	2.27%	18	2.16%
40-49	4	0.38%	5	0.48%	1	0.10%	4	0.41%	3	0.36%
50-59	2	0.19%	2	0.19%	1	0.10%	0	0.00%	0	0.00%
60-69	0	0.00%	1	0.10%	5	0.48%	0	0.00%	0	0.00%
70-79	0	0.00%	1	0.10%	0	0.00%	0	0.00%	0	0.00%
80-89	1	0.10%	2	0.19%	1	0.10%	0	0.00%	0	0.00%
90-99	1	0.10%	0	0.00%	0	0.00%	1	0.10%	1	0.12%
>100	0	0.00%	0	0.00%	0	0.00%	0	0.00%	0	0.00%
District Total	1,046		917		1,110		970		832	



*Each iTV course is only counted once no matter how many locations it broadcasts to. Also, each overlay course is only counted once no matter how many courses an instructor is teaching simultaneously.

Source: CASA Semester Class Counts by Range of Class Size Report 10/12/2017

Central Arizona College Factbook CAC Top 25 FTSE Generating Courses		
Year	Fall 2017	
Course	FTSE	Headcount
ENG101	196.0	980
MAT121	119.7	449
MAT151	80.0	300
BIO181	78.9	296
CIS120	78.8	394
ENG100	64.4	322
PSY101	64.2	321
ENG102	63.2	316
MAT118	57.1	214
MAT086	54.4	272
MAT092	52.4	262
BIO201	49.9	187
BIO156	48.5	182
RDG100	47.8	239
MHL207	45.2	226
SOC101	41.6	208
MAT141	38.9	146
COM100	38.4	192
BIO160	36.3	136
BIO202	34.7	130
MAT082	34.4	172
MHL100	29.8	149
BIO205	26.9	101
RDG091	26.6	133
EMS125	25.2	42

Central Arizona College Factbook CAC Top 25 FTSE Generating Courses		
Year	Fall 2016	
Course	FTSE	Headcount
ENG101	182.0	910
MAT121	135.7	509
CIS120	81.0	405
MAT151	78.4	294
PSY101	69.8	349
MAT086	67.6	338
BIO181	65.1	244
MAT092	63.2	316
ENG102	60.6	303
BIO156	57.9	217
ENG100	48.6	243
BIO201	48.5	182
RDG094	46.2	231
MHL207	44.8	224
SOC101	42.4	212
COM100	42.0	210
EMS125	37.8	63
BIO160	37.6	141
HPM173	32.2	161
MAT082	31.2	156
MHL100	31.0	155
HSE089	30.4	152
ENG090	29.6	148
HIS101	28.6	143
BIO202	28.3	106

Central Arizona College Factbook CAC Top 25 FTSE Generating Courses		
Year	Fall 2015	
Course	FTSE	Headcount
ENG101	187.4	937
MAT121	125.9	472
CIS120	92.4	462
MAT092	80.6	403
MAT086	70.6	353
MAT151	66.4	249
PSY101	65.8	329
ENG102	63.6	318
BIO156	52.5	197
BIO181	50.9	191
BIO160	50.7	190
COM100	50.6	253
ENG100	50.2	251
BIO201	47.2	177
RDG094	45.0	225
MHL207	40.2	201
MAT082	39.0	195
HSE089	36.8	170
SOC101	36.8	184
HCC116	36.6	183
COM263	32.4	162
HCC100	31.6	158
HPM173	31.2	156
MAT141	29.6	111
BIO202	27.7	104

Central Arizona College Factbook CAC Top 25 FTSE Generating Courses		
Year	Fall 2014	
Course	FTSE	Headcount
ENG101	184.0	920
MAT121	110.9	416
PSY101	102.2	511
CIS120	91.6	458
MAT092	71.6	358
SOC100	65.8	329
ENG102	64.2	321
COM100	62.8	314
MAT151	61.9	232
MAT086	61.8	309
ENG100	58.4	292
BIO160	53.6	201
BIO181	53.6	201
BIO201	53.1	199
MAT082	47.8	239
RDG094	44.6	223
BIO156	42.4	159
HCC116	41.4	207
MHL207	38.6	193
GED088	35.3	163
RDG091	33.9	127
EMS125	33.6	56
NTR141	33.6	126
SPA101	33.3	125
ENG090	32.6	163

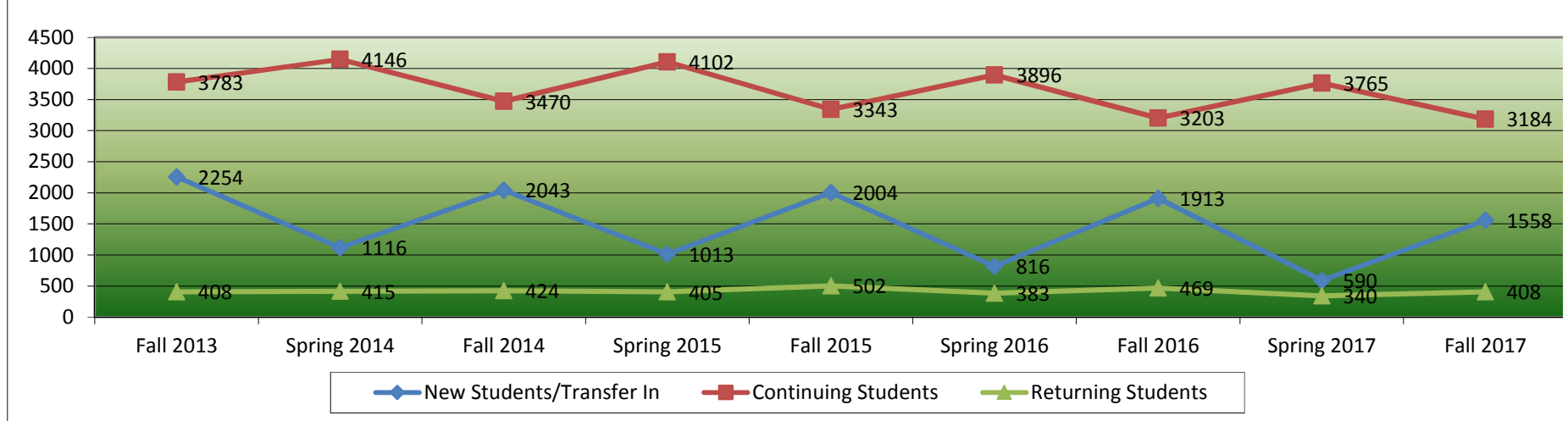
Central Arizona College Factbook CAC Top 25 FTSE Generating Courses		
Year	Fall 2013	
Course	FTSE	Headcount
ENG101	185.4	927
MAT121	111.7	419
PSY101	99.8	499
MAT092	92.2	461
CIS120	87.4	437
MAT086	82.2	411
BIO201	69.3	260
COM100	68.8	344
ENG102	67.2	336
GED089	63.2	316
MAT151	63.2	237
ENG100	61.8	309
SOC100	61.8	309
BIO160	61.6	231
RDG094	54.6	273
MAT082	53.8	269
BIO181	49.1	184
BIO156	42.1	158
EMS125	39.5	74
ENG090	36.8	184
NTR141	36.5	137
MHL207	36.4	182
COM263	35.8	179
MHL100	35.8	179
HCC116	34.0	170

Central Arizona College Factbook CAC Top 25 FTSE Generating Courses		
Year	Fall 2012	
Course	FTSE	Headcount
ENG101	184.2	921
MAT121	117.6	441
PSY101	109.4	547
CIS120	102.8	514
MAT092	96.4	482
BIO201	76.5	287
MAT086	74.6	373
ENG102	74.4	372
ENG100	73.8	369
COM100	70.6	353
RDG094	68.2	341
MAT151	68.0	255
BIO160	66.1	248
SOC100	65.4	327
MAT082	61.2	306
GED089	57.8	289
BIO156	57.3	215
EMS125	54.4	102
BIO181	52.8	198
BIO202	40.0	150
CHM130	36.5	137
SPA101	36.3	136
MHL207	35.0	175
COM263	34.0	170
HIS101	33.4	167

Note: Total includes non state funded students
Source: CASA Semester Top 100 Report 10/12/2017

	Fall 2013	Spring 2014	Fall 2014	Spring 2015	Fall 2015	Spring 2016	Fall 2016	Spring 2017	Fall 2017
New Students/Transfer In	2254	1116	2043	1013	2004	816	1913	590	1558
Continuing Students	3783	4146	3470	4102	3343	3896	3203	3765	3184
Returning Students	408	415	424	405	502	383	469	340	408
Total	6445	5677	5937	5520	5849	5095	5585	4695	5404

	Fall 2013	Spring 2014	Fall 2014	Spring 2015	Fall 2015	Spring 2016	Fall 2016	Spring 2017	Fall 2017
New Students/Transfer In	35.0%	19.7%	34.4%	18.4%	34.3%	16.0%	34.3%	12.6%	28.8%
Continuing Students	58.7%	73.0%	58.4%	74.3%	57.2%	76.5%	57.4%	80.2%	58.9%
Returning Students	6.3%	7.3%	7.1%	7.3%	8.6%	7.5%	8.4%	7.2%	7.5%



Definitions:

New Student: Student who has no previous enrollment records at CAC

Continuing Student: Student who has attended CAC in the previous semester

Returning Student: Student who has attended CAC in the past but not during the previous semester

Fall Calculation for Continuing Students = Enrollment in previous (Spring Semester + Summer2 +Short-Term + OEOX + Summer 1) continuing in Fall Semester

Spring Calculation for Continuing Students = Enrollment in previous Fall Semester continuing in Spring

Source: Enrollment Tracking Report 3/30/2017

Central Arizona College
Factbook
Fall District FTSE & Headcount by Division & Subject Code

	SUBJ CODE	FTSE					Headcount				
		Fall 2013	Fall 2014	Fall 2015	Fall 2016	Fall 2017	Fall 2013	Fall 2014	Fall 2015	Fall 2016	Fall 2017
	ARH	0.0	3.4	0.0	0.0	0.0	0	17	0	0	0
	ASB	16.4	14.0	17.2	14.3	19.9	78	69	79	65	91
	CPD	29.5	50.7	38.6	37.6	0.0	423	447	386	436	0
	GEO	2.6	4.6	3.6	6.0	9.5	13	23	18	25	41
	HIS	54.4	51.0	58.6	50.2	46.2	268	253	291	250	230
	PHI	49.4	51.2	34.4	40.2	39.6	240	255	169	199	194
	POS	6.6	0.0	0.0	0.0	0.0	39	0	0	0	0
	PSY	130.4	128.4	91.0	103.0	92.8	650	640	446	505	453
	SOC	68.4	72.4	47.8	52.0	45.8	339	361	235	260	229
	SWU	2.2	3.8	3.0	4.6	11.0	11	19	15	22	55
	WGS	0.0	0.0	1.4	3.4	4.6	0	0	7	17	23
Social/Behavioral Sciences Total		405.1	425.3	337.8	348.1	313.0	1803	1795	1517	1623	1,268
Sports and Fitness	PAC	67.6	59.8	48.9	57.7	39.2	748	669	521	601	380
	PED	10.5	11.1	19.9	23.1	13.3	46	46	82	92	55
	PEH	21.7	19.3	16.6	24.5	13.8	104	96	80	123	68
	PEV	6.9	1.8	7.3	6.4	6.9	66	27	63	51	53
	REC	5.4	7.8	7.2	5.4	5.0	27	36	32	22	23
Sports and Fitness Total		112.1	99.9	99.9	117.1	78.2	883	793	690	769	479
Technology	AGB	14.6	17.0	17.2	13.6	19.0	60	77	74	63	86
	AGC	2.0	0.0	6.0	5.6	0.0	33	0	22	22	0
	AGS	23.9	30.4	34.3	33.5	34.1	89	112	133	126	129
	ANS	17.3	20.3	26.3	24.8	24.8	76	78	96	84	69
	AUT	2.5	3.1	2.8	3.7	5.5	17	21	20	25	37
	CET	5.3	6.9	5.7	5.3	6.8	21	24	24	19	23
	CRP	3.0	5.0	3.0	4.4	3.0	15	24	15	22	15
	DFT	3.6	3.0	2.0	2.8	3.2	18	15	10	14	16
	DIE	26.4	14.0	19.9	42.4	33.7	79	48	62	69	61
	ELC	1.8	3.0	2.8	1.4	5.4	9	15	13	7	20
	HEO	18.5	18.5	16.3	11.7	17.2	40	41	36	31	43
	MET	1.4	0.0	0.8	4.4	7.7	7	0	4	6	27
	RET	2.3	0.0	0.5	0.0	0.0	9	0	2	0	0
	WLD	18.6	20.0	20.2	28.0	43.0	57	68	66	56	106
Technology Total		141.2	141.1	157.8	181.5	203.4	405	389	447	423	491
Workforce/Community Educa	CCE	3.8	2.0	2.2	0.0	0.0	36	10	11	0	0
	CRP	0.0	0.0	0.0	1.3	0.0	0	0	0	10	0
	ESL	17.2	13.0	10.0	9.0	14.0	86	65	50	45	70
	GED	63.2	35.3	0.0	0.0	0.0	316	163	0	0	0
	HSE	0.0	0.0	36.8	30.4	18.8	0	0	170	152	94
	WFE	1.2	0.0	0.0	0.0	0.0	0	0	0	0	0
Workforce/Community Education Total		84.2	50.3	49.0	40.7	32.8	438	238	231	207	164
District Unduplicated Total		3,642.1	3,400.7	3,369.3	3213.3	3121.9	6445	5937	5849	10231	9,741

Note: Unduplicated Headcount for the District will not equal the sum of the individual Divisions

Note: Total includes non state funded students

Source: CASA Semester FTSE and Enrollment by Subject Report 10/12/2017